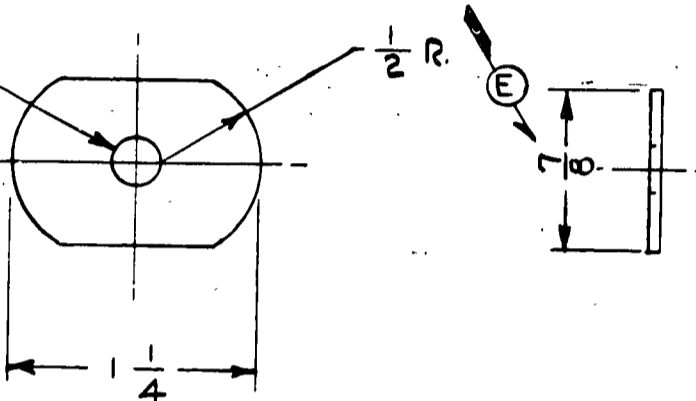
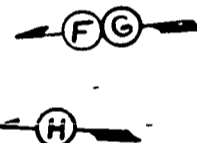


.250 PILOT HOLE



MODEL	PER SHIP	NEXT ASSEMBLY
J-4	12	10522, 10532, 12551
J3L-4A, L-4B, TG-8	8	12512, 12551, 14192
J5, J5C, J5D, NE-1	12	10522, 10532, 12551
L-14	12	12551, 10522, 90409



REVISION	DATE	BY	MODEL	PER PLANE	NEXT ASSEMBLY	SUPERSEDES	SUP. BY	PART NO.	NO. REQ.	SIZE	DESCRIPTION
K	6-12-51	I.M.M.	NOTED	NOTED	NOTED					.062x7/8x1/4	#1025 STEEL
J	11-30-45	I.D.B.									
H	6-12-45	J.B.M.									
G	11-29-43	I.M.M.									
F	11-22-43	I.D.B.									
E	10-11-43	C.J.HIL									
D	7-31-43	J.E.C.									
LET											

THIS DRAWING IS THE PROPERTY OF THE PIPER AIRCRAFT CORP. AND ITS POSSESSION BY UNAUTHORIZED PERSONS SHALL NOT BE CONSTRUED AS PERMISSION TO REPRODUCE FOR SALE IN WHOLE OR IN PART ANY DEVICES SHOWN THEREON.

**PIPER AIRCRAFT CORP.**  
LOCK HAVEN, PENNA.

SCALE FULL SIZE TOTAL WT.—LBS.

FINISH—PIPER SPECIFICATION # 10

MANUFACTURING PRACTICES—PIPER SPECIFICATION # 9

PLATE — REINFORCEMENT

CROWLEY	P.R.R.	
7-31-43	8-2-43	
DRAFTSMAN	CHECKER	STANDARDS

**10541**

**A 20**