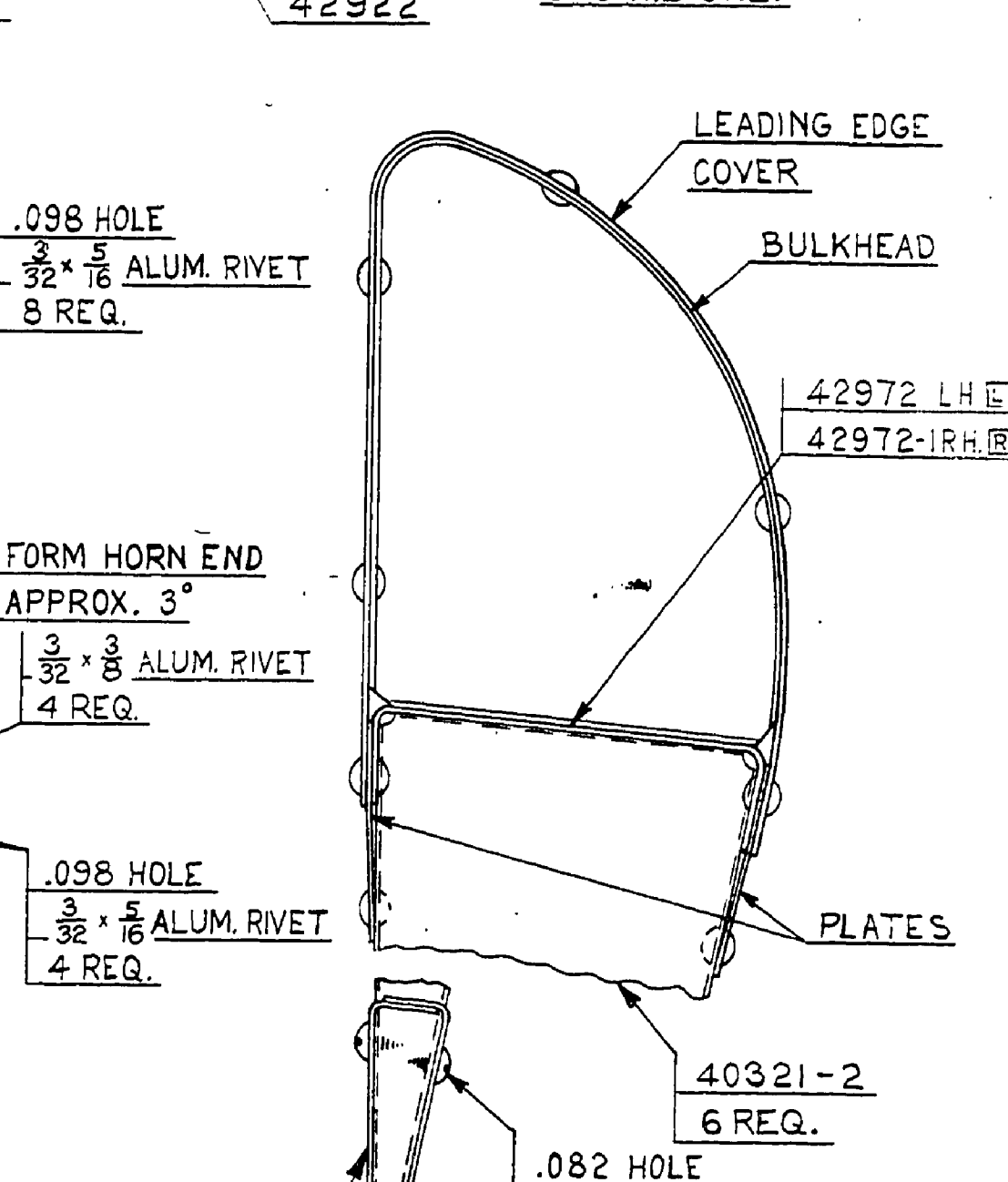
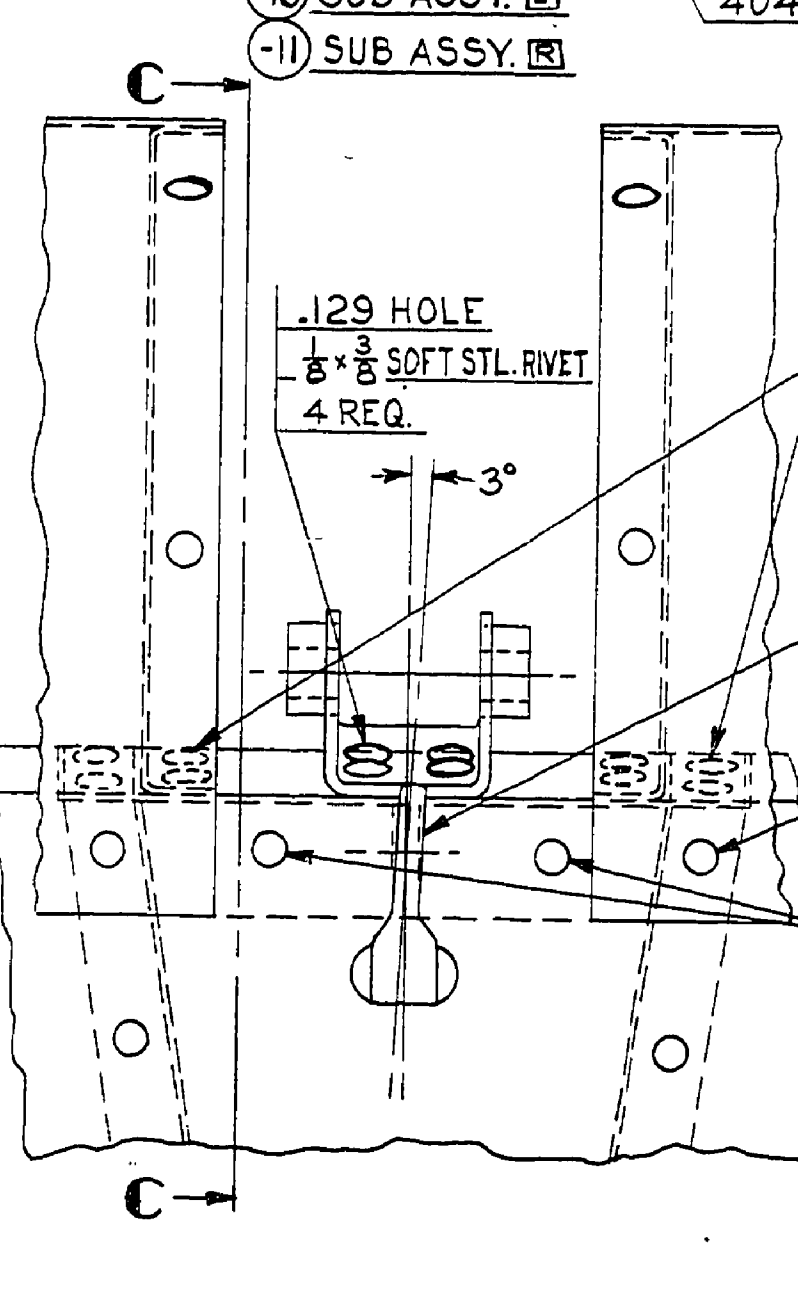
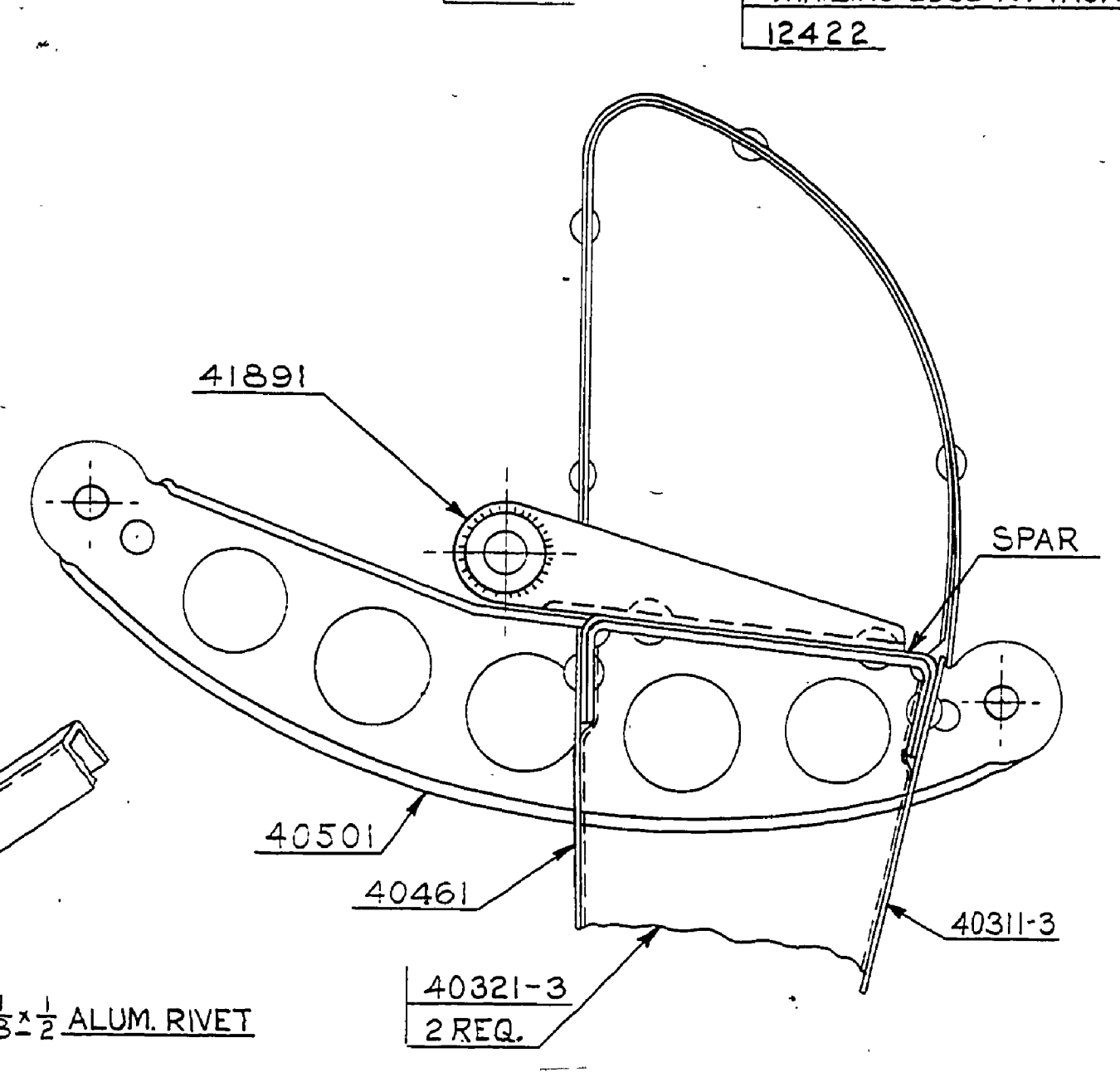
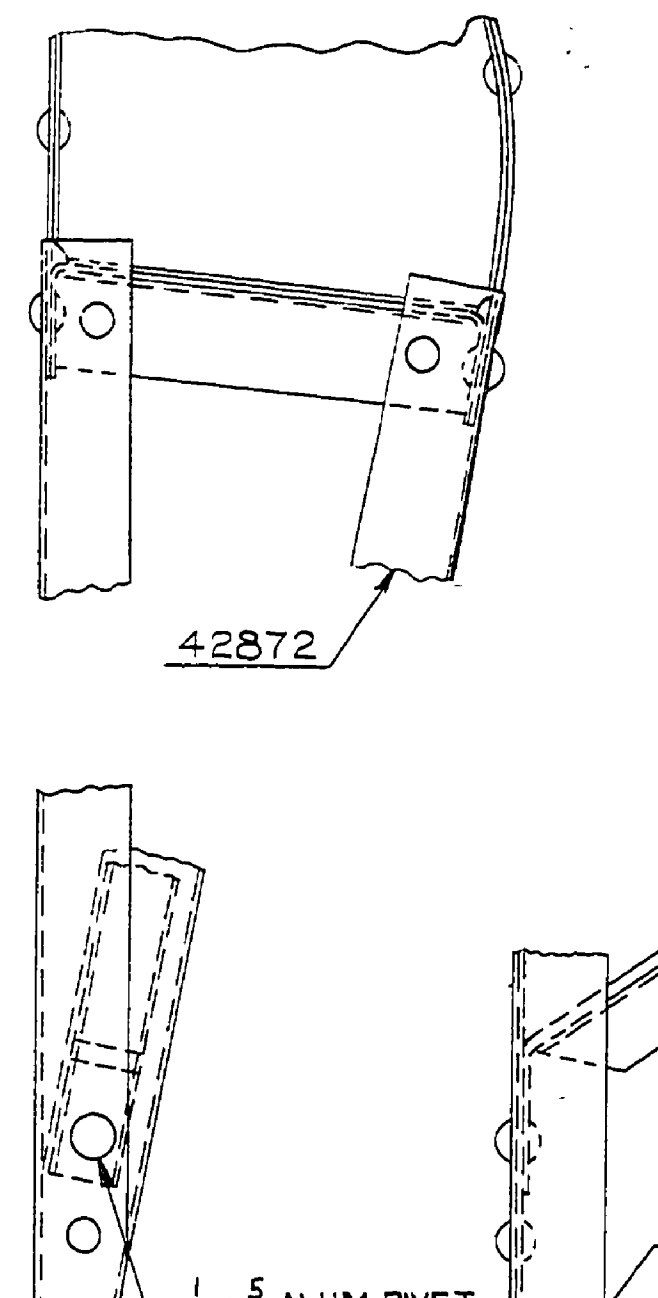
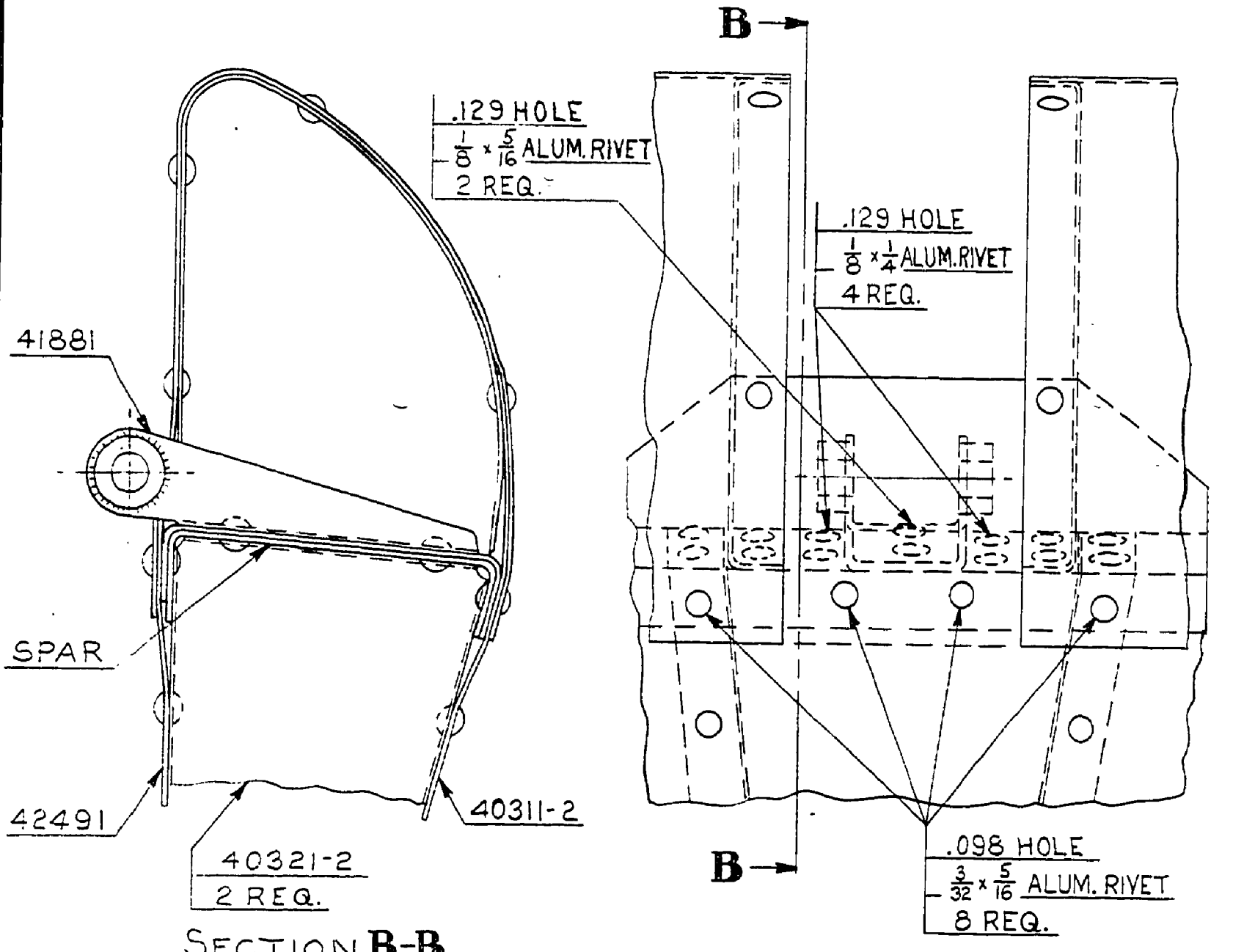
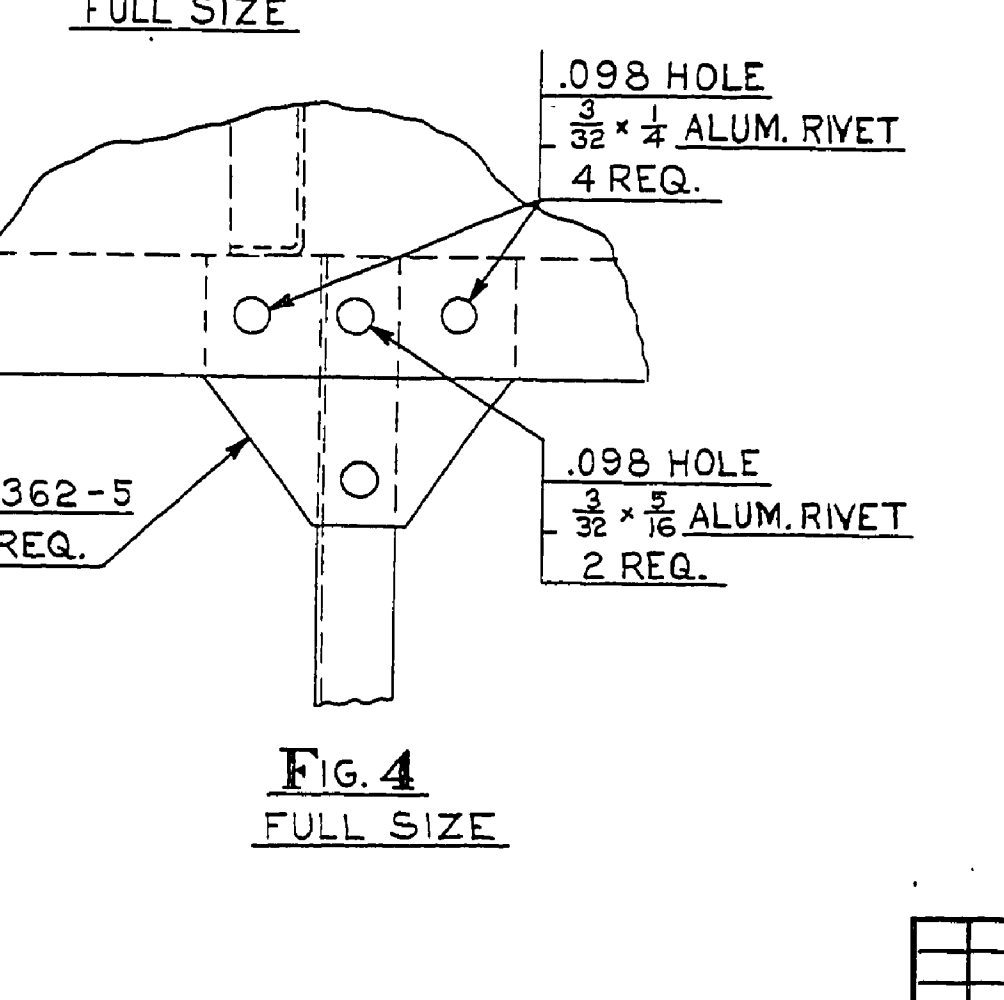
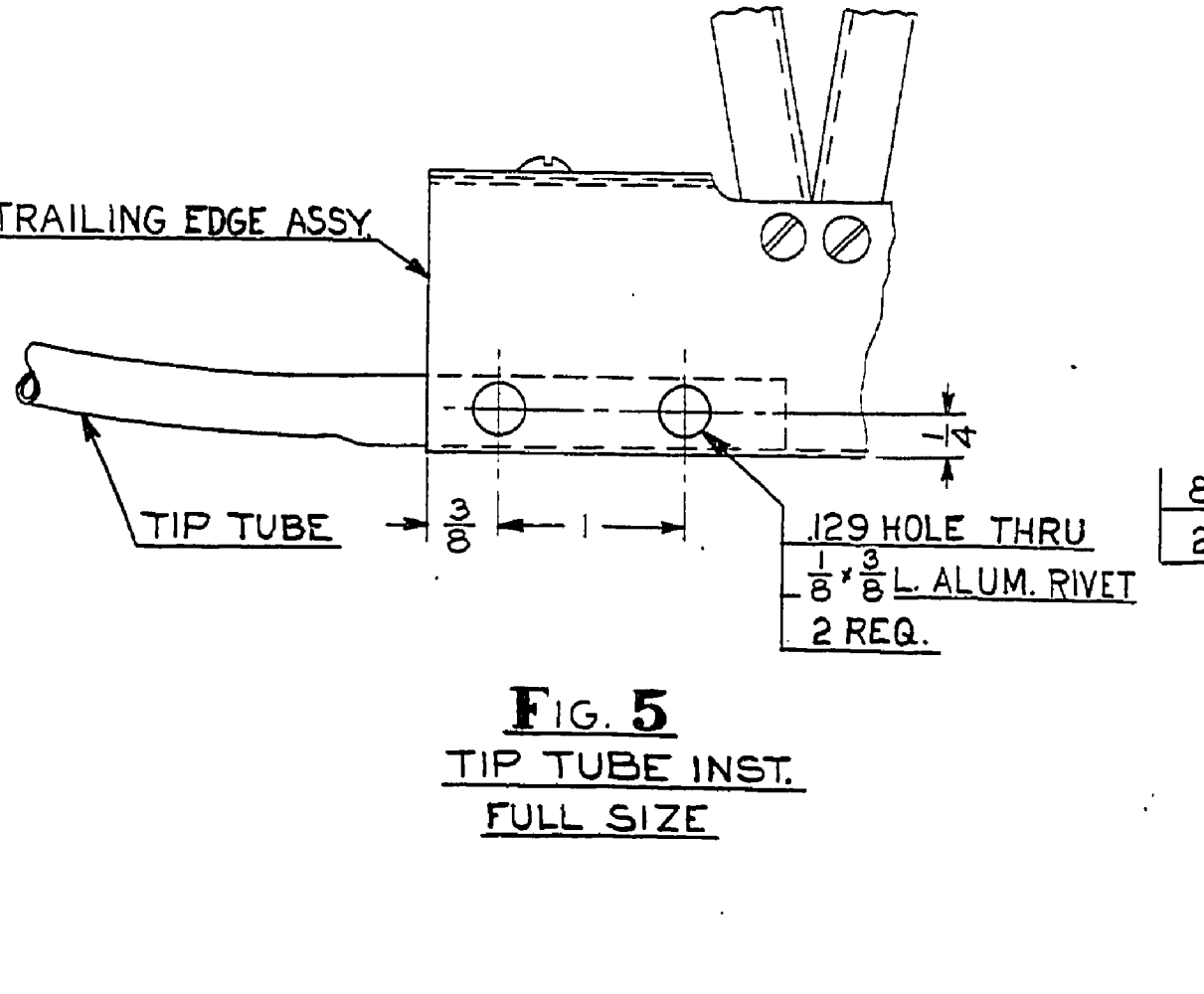


*4	24	1/4 LONG TYPE 'A' STOVE HD. PK. SCF
	4	1/8 x 3/16 LONG RD HD SOFT STL. RIVET
	1	1/8 x 1/2 LONG
	2	1/8 x 3/16 LONG
	8	1/8 x 7/16 LONG BRAZIER HD.
	8	1/8 x 1/4 LONG SOFT ALUM.
	4	3/32 x 3/16 LONG RIVET
	38	3/32 x 5/16 LONG
	42	3/32 x 1/4 LONG
	240	3/32 x 3/16 LONG
12422	1	TRAILING EDGE ATTACHMENT
81362-5	10	PLATE
42972-1	1	SPAR
42972	1	TRAILING EDGE
42933	1	TRAILING EDGE
42922	1	TRAILING EDGE
42872	1	TIP RIB ASSEMBLY
42491	2	REINFORCEMENT PLATE
41891	1	HINGE ASSEMBLY
41881	2	HINGE ASSEMBLY
40581-3	1	BRACE
40581-2	1	BRACE
40501	1	HORN ASSEMBLY
40471-5	1	
40471-8	1	
40471-7	1	LEADING EDGE COVER
40471-4	1	LEADING EDGE COVER
40471-3	1	
40471-6	1	
40471-2	1	
40461	1	REINFORCEMENT PLATE
40451-3	4	BULKHEAD
40451-2	16	BULKHEAD
40421-3	3	TIP TUBE
40411	1	REINFORCEMENT
40321-3	2	RIB
40321-2	10	RIB
40311-3	1	REINFORCEMENT PLATE
40311-2	2	REINFORCEMENT PLATE
-11		CONSISTS OF 42872, 41891, 40501, 42972-1, 2 OF 40321-3, 41881, 4 OF 40451-2, 40451-3, 10 OF 40321-2, 4 OF 1/8 x 3/16 STEEL RIVETS, 4 OF 1/8 x 7/16 ALUM. RIVETS, 8 OF 1/8 x 1/4 RIVETS, 36 OF 3/32 x 3/16 RIVETS.
-10		CONSISTS OF 42872, 41891, 40501, 42972, 2 OF 40321-3, 41881, 4 OF 40451-2, 40451-3, 10 OF 40321-2, 4 OF 1/8 x 3/16 STL. RIVETS, 4 OF 1/8 x 5/16 ALUM. RIVETS, 8 OF 1/8 x 1/4 RIVETS, 36 OF 3/32 x 3/16 RIVETS.
-9		CONSISTS OF 40451-3, 40471-2 & 4 OF 3/32 x 3/16 RIVETS
-8		CONSISTS OF 40451-2, 40471-2 & 4 OF 3/32 x 3/16 RIVETS
-7		CONSISTS OF 40471-3, 5 OF 40451-3 & 20 OF 3/32 x 3/16 RIVETS
-6		CONSISTS OF 40471-7, 5 OF 40451-2 & 20 OF 3/32 x 3/16 RIVETS
-5		CONSISTS OF 40471-7, 5 OF 40451-3 & 20 OF 3/32 x 3/16 RIVETS
-4		CONSISTS OF 40471-4, 5 OF 40451-2 & 20 OF 3/32 x 3/16 RIVETS
-3		CONSISTS OF 40451-3, 40471-8 & 4 OF 3/32 x 3/16 RIVETS
-2		CONSISTS OF 40451-2, 40471-5 & 4 OF 3/32 x 3/16 RIVETS



NOTES:
 1. PARTS MARKED ⊠ USED ON LEFT ASSEMBLY ONLY. PARTS MARKED ⊡ USED ON RIGHT ASSEMBLY ONLY.
 2. CENTER HINGE INSTALLED TO LINE WITH INBOARD AND OUTBOARD HINGES.
 3. ALL RIVETS TO BE SPACED APPROXIMATELY AS SHOWN.
 4. UNLESS OTHERWISE NOTED ALL RIVETS ARE 3/32 x 3/16 SOFT ALUMINUM, .098 HOLE.
 5. ALL BULKHEAD FLANGES SHALL FACE OUTBOARD EXCEPT ATAILERON ENDS AND CUTOUTS. CORRESPONDING RIBS SHALL FACE INBOARD.
 6. ALL PARTS TO THIS ASSEMBLY MUST BE INSTALLED SO THAT NO SHARP EDGES, CORNERS OR BULGES SHALL PROTRUDE BEYOND THE FABRIC LINE.
 7.AILERON HINGE CENTERS MUST COINCIDE WITH CENTERS OF RELATED PARTS ON WING ASSEMBLY.
 8. .098 HOLES DRILLED THRU LEADING EDGE COVER AND BULKHEADS 40451-2 & 40451-3 ON ASSEMBLY SPACED APPROXIMATELY AS SHOWN IN SECTION C-C.



ASSY. NO.	REMARKS
42585	L.H. SHOWN
42585-1	R.H. OPPOSITE
42585-12	L.H. SHOWN & CUT AS NOTED IN FIG. 1
42585-13	R.H. OPP. & CUT AS NOTED IN FIG. 1

NO.	REVISION	DATE	BY
AA	REDRAWN & REVISED	8-10-50	HJK
1	REVISION		

NO.	REVISION	DATE	BY

SCALE: 3/16" = 1" IF NOT NOTED
 FINISH: PIPER SPECIFICATION #10
 MANUFACTURING PRACTICES: PIPER SPECIFICATION #10

MODEL PER PLANE | NEXT ASSEMBLY | SUPERSEDES | SUP. BY
 THIS DRAWING IS THE PROPERTY OF THE PIPER AIRCRAFT CORP. AND ITS POSSESSION BY UNAUTHORIZED PERSONS SHALL NOT BE CONSIDERED AS PERMISSION TO REPRODUCE FOR SALE, IN WHOLE OR IN PART, ANY DEVICES SHOWN THEREON.

AA REDRAWN & REVISED 8-10-50 HJK
 PIPER AIRCRAFT CORP. LOCK HAVEN, PENNA.
 H.R.K. C.E.K.
 DRAFTSMAN CHECKER STANDARDS
 42585

A882